

INDUSTRIAL DIESEL ENGINE

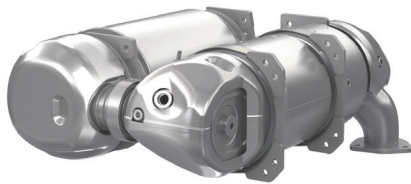
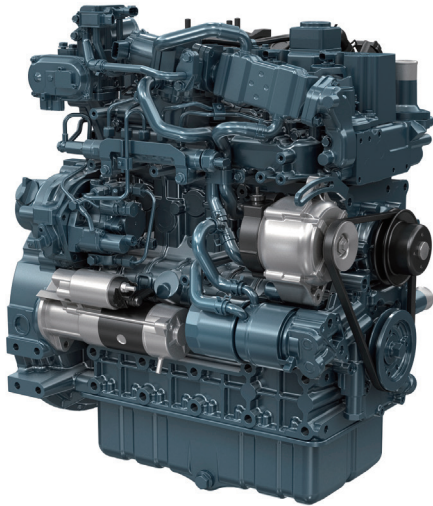
Kubota 07 Series (4-Cylinder)

V3307-CR-TI-E5-SCR



Rated Power

90.0 kW @ 2400 rpm



Photograph may show non-standard equipment.

Performance Curves

Approximately 65% Increase in Output to 90 kW

The V3307 model traditionally operated within the power range of under 56 kW, but with this new model, the output expands to 90 kW, representing an approximate 65% increase. This allows for downsizing from larger displacement engines to this model, achieving improved fuel efficiency and greater flexibility in machine integration.

Maintaining the Footprint of the V3307-CR-TI

The overall dimensions, excluding the aftertreatment system, are equivalent to the current model, the V3307-CR-TI. This model expands the engine variations while utilizing existing core components, ensuring compatibility with most current accessories.

Compact Mixer Specification - Aftertreatment System

To comply with emissions regulations for outputs exceeding 56 kW, the SCR system will be installed for the first time on the V3307 model. We have developed a compact aftertreatment system that significantly enhances installation flexibility compared to traditional systems. It features an improved layout in the mixer section between the DPF and SCR components.

CONTACT US

<https://engine.kubota.com/>



Engine Specifications

Engine model		V3307-CR-TI-E5-SCR
Emission regulation		EPA/CARB Tier4 + EU Stage V
Type		Vertical, water cooled 4-cycle diesel engine
Cylinders		4
Bore and Stroke	mm (in)	94.0 x 120.0 (3.70 x 4.724)
Displacement	L (cu.in)	3.331 (203.3)
Aspiration		Turbocharged + Turbo After Cooler
Aftertreatment		DPF + SCR of Compact Mixer Type
Rated output / speed ^{*1}	kW (HP) / rpm	90.0 (120.7) / 2400
Maximum torque / speed ^{*1}	Nm (lb-ft) / rpm	400.0 (295.04) / 1500
Combustion system		Direct Injection
Fuel system		Common rail system
Length x Width x Height ^{*2} (without aftertreatment unit)	mm (in)	700 x 579 x 777 (27.6 x 22.8 x 30.6)
Dry weight ^{*2}	kg (lb)	305 (673)

*1: Gross intermittent SAE J1995

*2: Exclude cooling fan and exclude aftertreatment unit